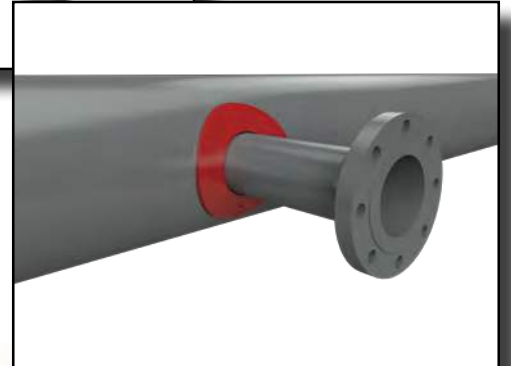
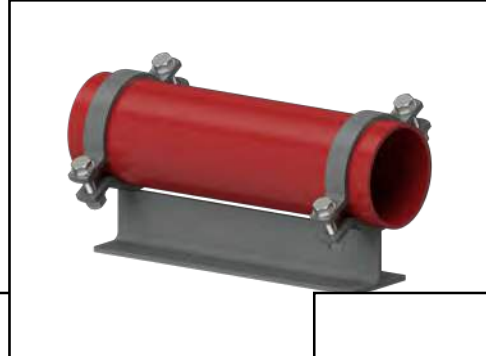
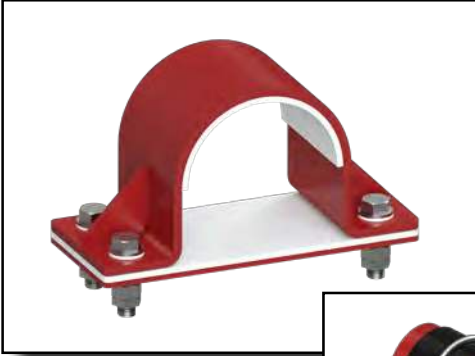




# RedLineIPS

*Piping Supports & Accessories*

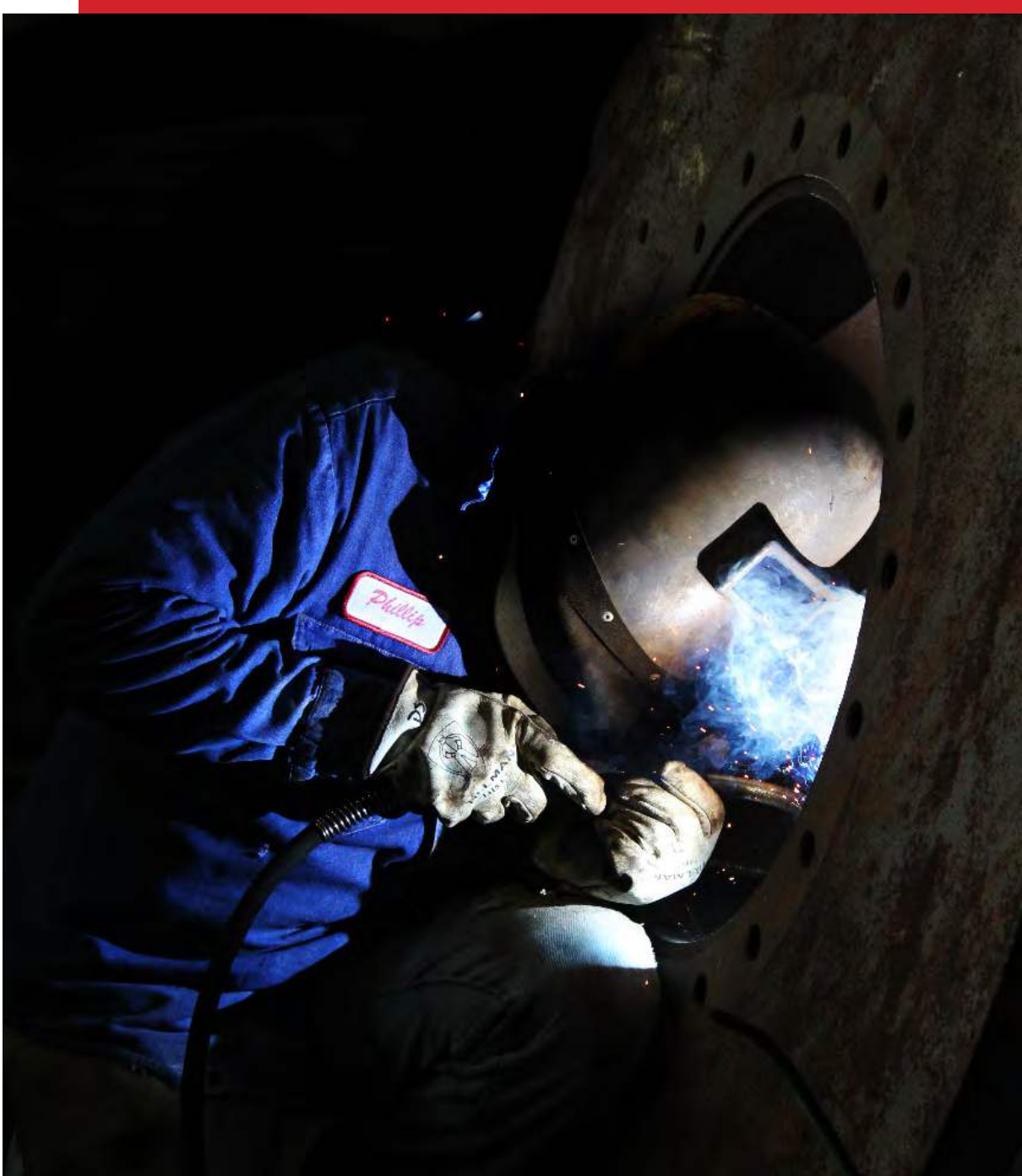


**Cogbill Construction, LLC**

(409) 768-1419 | [www.RedLineIPS.com](http://www.RedLineIPS.com) | [www.CogbillConstruction.com](http://www.CogbillConstruction.com) | [Sales@RedLineIPS.com](mailto:Sales@RedLineIPS.com) | 2325 S Main St. Vidor, TX 77662

## COGBILL CONSTRUCTION

With decades of experience in custom metal fabrication, our team stands as a leader in the industry. Our commitment to service sets us apart from the crowd. We emphasize safety, quality, efficiency and on-time delivery, using the latest craft and industrial engineering practices. Be it a local job with a small work order or a national project with 1,000+ deliverables, we design, fabricate, deliver and install, on time and to exact specifications. Our RedLineIPS brand of piping products and services, including our corrosion protection system, is built on more than 20 years of Cogbill Quality. We look forward to working with you.



# WE PROVIDE THE SUPPORT AND PROTECTION YOUR PIPING SYSTEMS HAVE BEEN MISSING



Our signature RedLineIPS (Industrial Products & Services) brand of products offers durable solutions to your piping problems.

Our vision is to create unmatched support and protection for your piping systems, reducing your project's costly repairs and time-consuming shutdowns.

You can depend on our products to withstand time, vibration, corrosion and harsh environmental factors.

We build to your exact specifications. Our in-house design team gives us the capability to produce dependable solutions for your complex projects. We can provide 3D models of your engineered designs to help you visualize the final product.

Cogbill RedLineIPS line of products allows you to focus on what matters: getting your project completed safely, effectively, under budget, and on time, while adhering to the highest quality standards.

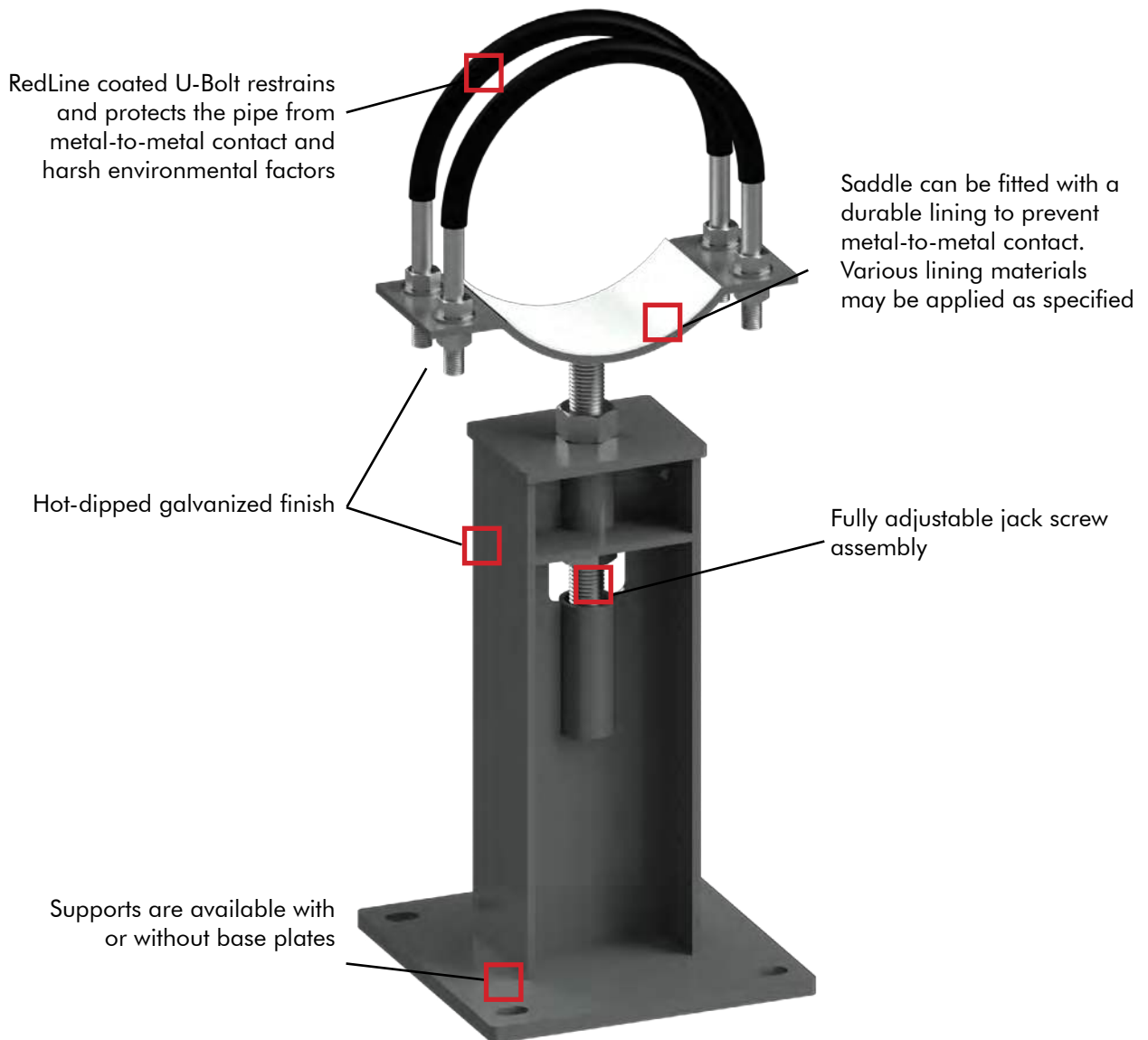
- |                           |                       |
|---------------------------|-----------------------|
| ADJUSTABLE SUPPORTS       | HOLD DOWN CLAMPS      |
| NON-ADJUSTABLE SUPPORTS   | SHIM BLOCK ASSEMBLIES |
| BASE SUPPORTS             | REINFORCEMENT PADS    |
| MISC. STRUCTURAL SUPPORTS | STRAINERS             |
| DUMMY LEGS                | HANGERS               |
| PIPE SHOES & SADDLES      | SPECTACLE BLINDS      |
| COMPOSITE WEAR PADS       | PIPE GUIDES & STOPS   |

International certifications in technical and safety practices ensure we are prepared at all times to handle any project



ACCIDENT  
FREE  
zone

# PIPE SUPPORTS



## ADJUSTABLE PIPE SUPPORTS

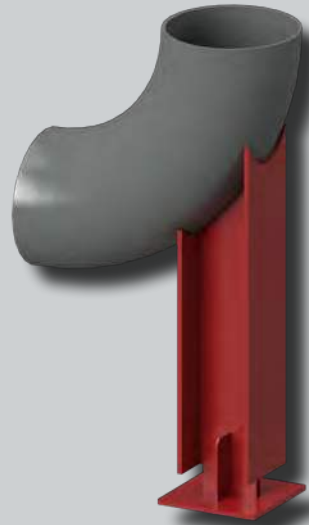
Adjustable Pipe Supports vary in design and configuration depending on customer requirements. They are used to support pipes during installation, operation, or both. Height adjustability offers a measure of flexibility for multi-time field adjustment. RedLineIPS adjustable supports include the following features:

- To prevent metal-to-metal contact and to minimize vibration, a saddle can be fitted with various liners pertinent to each application.
- Liners include VIBLON, PVC, NEOPRENE, VHT/CL, TEFLON and FRP, among others.
- Saddles can also be fabricated to incorporate U-bolts to restrain and secure the pipe.
- Adjustable supports are fabricated as specified by the customer to fit specific pipe sizes, heights and applications.

## NON-ADJUSTABLE PIPE SUPPORTS

Non-adjustable and one-time adjustable supports vary in design and can be fabricated from carbon, stainless, or alloy steel and meet the customer's specific height requirement.

- They can be welded to the pipe in either the shop or field settings.
- One-time adjustable supports allow for a single adjustment to be made in the field to account for a sloped grade.
- Our supports are designed for easy installation and are specifically coped to fit pipe or elbow fittings.
- Other configurations can be fabricated according to customer needs.



## PIPE DUMMY LEGS

Dummy legs are designed to attach horizontally to a pipe spool, usually to an elbow. They function as an extension where added support can be provided when typical vertical supports cannot be utilized.

- Fabricated from either pipe or structural beams, and typically field-welded to the pipe.
- Custom-made to meet the customer's specific line sizes, material grades, dimensions, and AMLs.
- Fabricated for easy installation and are specifically coped to fit pipe or elbow fittings.



## PIPE SHOES



Pipe Shoes are used to support insulated piping and to transfer loads and forces to a pipe's support structure. This keeps the weight of a pipe from damaging its insulation. Also, a pipe shoe on a non-insulated line can function as a wear plate to protect against corrosion at the pressure boundary of a pipe's wall.

Welded pipe shoes are the most cost-effective solution for elevating a piping system to avoid damage to insulated piping. Shoes support the weight of a pipe and guide and restrain thermal movements in piping systems. They can also be used to prevent metal-to-metal contact between an uninsulated pipe wall and the supporting steel.

Non-welded pipe shoes, such as clamped pipe shoes or pipe shoes with U-Bolt fasteners, allow weld-free installation that does not require skilled labor or hot work permits. They can incorporate low friction slide plates to reduce thermal loads on the support structures. Clamp liners, such as PTFE, Neoprene, and PVC, are but a few of the materials we can add to isolate the pipe clamp from the pipe wall to protect against galvanic corrosion.

RedLineIPS Pipe Shoes come in a variety of designs and are used to support piping as well as transfer piping loads to the supporting structures.





Clamped Shoe



U-Bolt Clamped Shoe



Cold Shoe



Multiple Shoe Guide Assembly



Cradle Shoe



Large Welded Shoe



Welded Shoe



Tall Shoe



Reinforced Shoe



Welded Shoe with Pad

# REDLINEIPS COMPOSITE WEAR PADS

Cogbill's RedLineIPS Composite Wear Pad System delivers unmatched support and corrosion protection to industrial piping systems. Our wear pads are manufactured from a specially-formulated vinyl ester resin. This proprietary material is UV stable and load tested to ensure peak performance in the most demanding environments such as marine, off-shore and other highly corrosive environments. RedLineIPS pads and epoxy combine to provide high shear and compressive strength\*. Each pad has a textured interior profile finish, covered by a protective film, for better adhesion. RedLineIPS offers a comprehensive system that can include installation and training services, per customer request.

\* Verified by independent lab testing, contact us for details



OUTSTANDING CORROSION PROTECTION



-320° TO 400°F WIDE RANGE OF THERMAL TOLERANCE



FIRE RETARDANT



ACCOMMODATE ANY PIPE SIZE



MANUFACTURING PROCESS PRECISELY MATCHES PIPE NPS DIAMETER



WELDING AND HOT WORK PERMITS NOT REQUIRED



INSTALL ON LIVE LINES, SYSTEM SHUTDOWNS NOT REQUIRED



MAINTENANCE-FREE PERFORMANCE

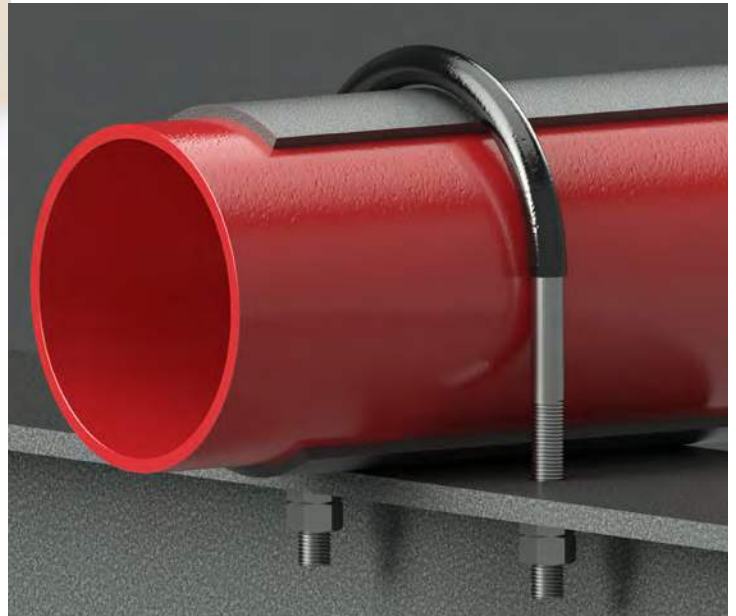






## SPECIFICATIONS

COMPOSITION	REDLINEIPS COMPOSITE
MAX COMPRESSIVE STRENGTH	90,000 LBS.
TEMPERATURE RANGE	-320°F TO +400°F
INSTALLATION	REDLINE IPS EPOXY SYSTEM
REQUIRED ACCESSORIES	EPOXY, STATIC MIXING NOZZLE, DUAL EPOXY APPLICATOR
CUSTOM MANUFACTURING	AVAILABLE IN ANY THICKNESS, COVERAGE ANGLE AND LENGTH



## REDLINEIPS WEAR PAD SYSTEM



1

### WEAR PAD

TEXTURED PROFILE FINISH ON INNER SURFACE, PERFECT FOR ADHESION

CUSTOM LENGTHS, THICKNESSES, AND DEGREES OF COVERAGE



2

### TWO-PART EPOXY

HIGH SHEAR & PEEL STRENGTH

RESISTANT TO SHOCK, EXTREME TEMPERATURES, CHEMICALS & CRYSTALLIZATION



3

### APPLICATOR GUN

REMOVES HUMAN ERROR & DELIVERS CONSISTENT & RELIABLE APPLICATION



4

### STATIC MIXER

16 INTERNAL MIXING ELEMENTS EFFICIENTLY MIX TWO-PART EPOXY IN A PERFECT 1:1 RATIO



5

### EMERY CLOTH

CREATES A ROUGHENED PROFILE FOR BETTER EPOXY ADHERENCE



6

### CONTACT CLEANER

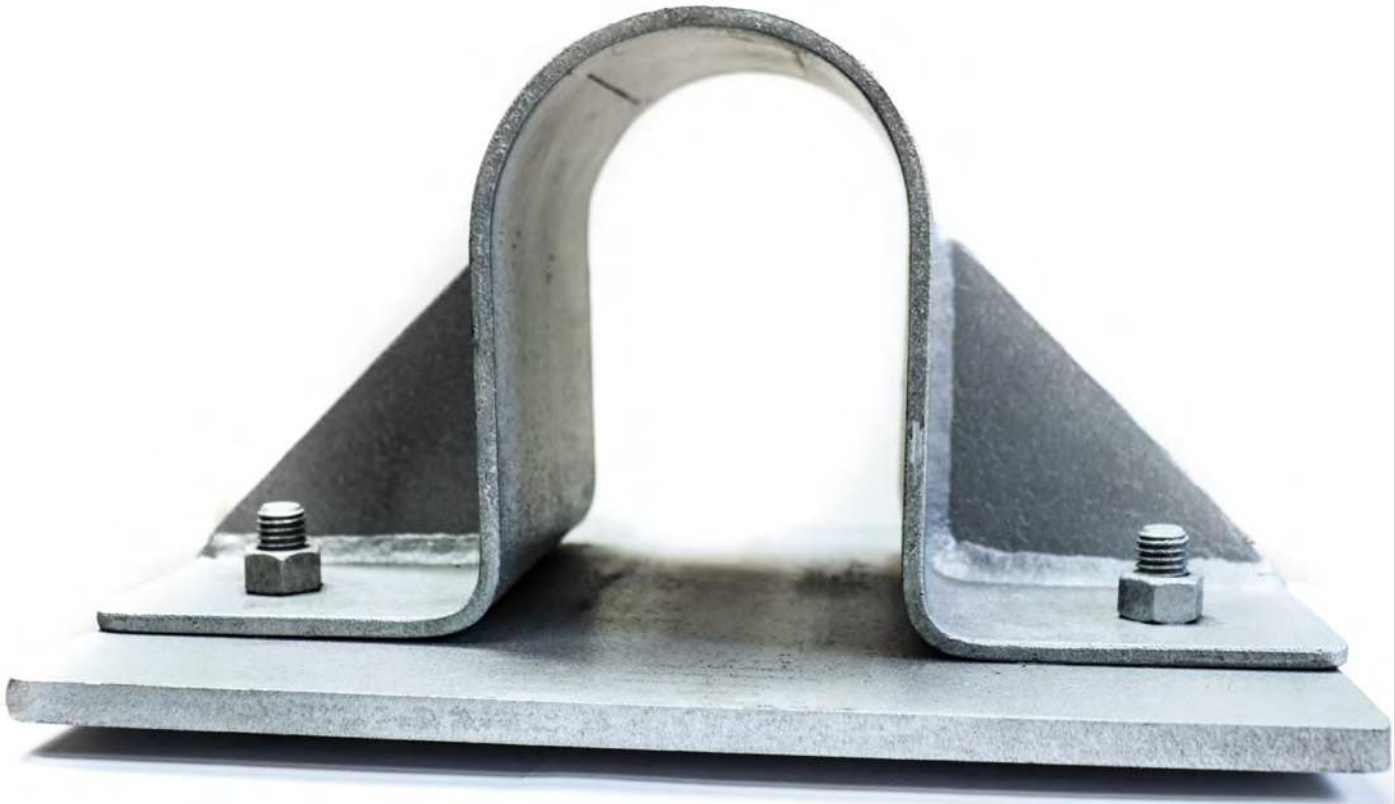
ENSURES A CLEAN SURFACE FOR AN EFFECTIVE & LONG LASTING BOND

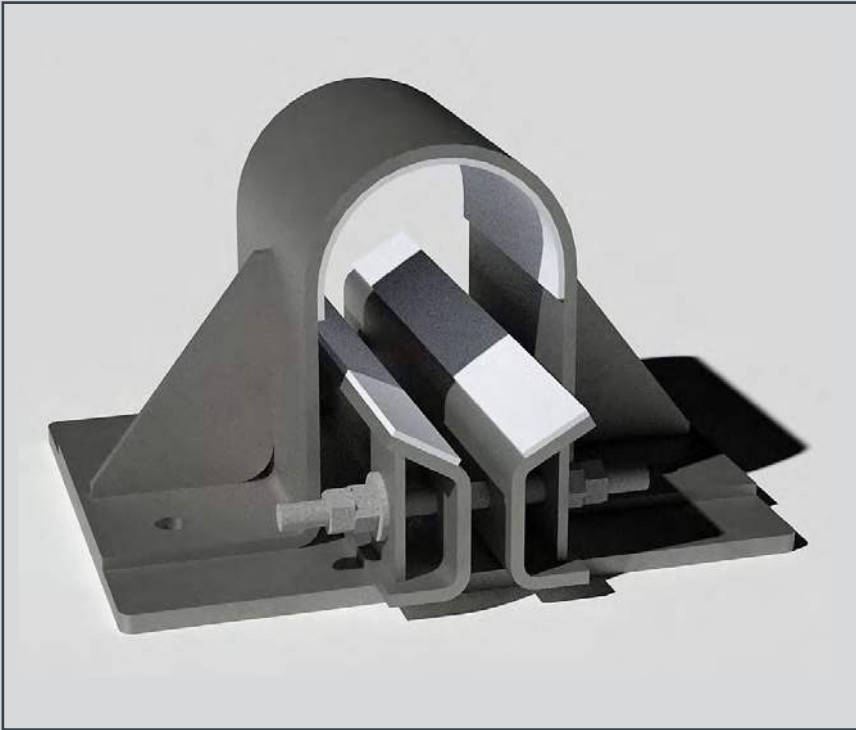
## CLAMPS, GUIDES & SHIM BLOCKS

Vibration from either fluid flow or from rotating equipment in industrial piping systems can impact the integrity of the pipes. Hold Down Clamps are a specialized type of pipe supports that restrain a pipe both vertically and horizontally, while allowing it to move axially. They can also be designed with slotted holes to allow for a limited amount of horizontal movement. Some customers prefer a Shim Block Assembly in the design of Hold Down Clamps. This design allows for a better vertical alignment of the piping system, to ensure the system is installed as designed.

RedLineIPS Clamps and their shim block assemblies can be fitted with specialized liners to avoid metal-to-metal contact while ensuring smooth axial movement, thus extending the life of a piping system and keeping it free from corrosion.

SIZE RANGE	2"-48" (custom sizes available)
MATERIAL	Carbon, stainless, and other alloys
FINISH	HD Galvanized, Painted





### GUIDE ASSEMBLY

Shim block guide assemblies paired with our hold down clamps permit axial movement. These guides allow height adjustability for field fit. This design helps to maintain the proper alignment of the system.



### LINERS

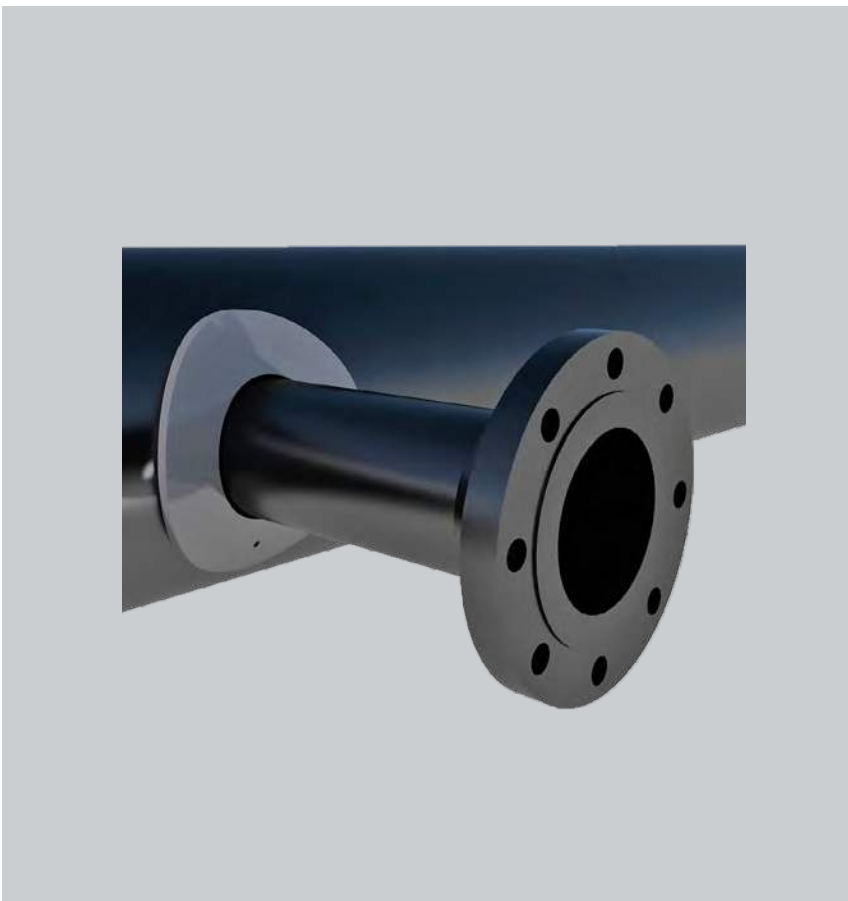
PTFE  
VIBLON  
PVC  
NEOPRENE  
VHT/CL  
TEFLON  
FRP

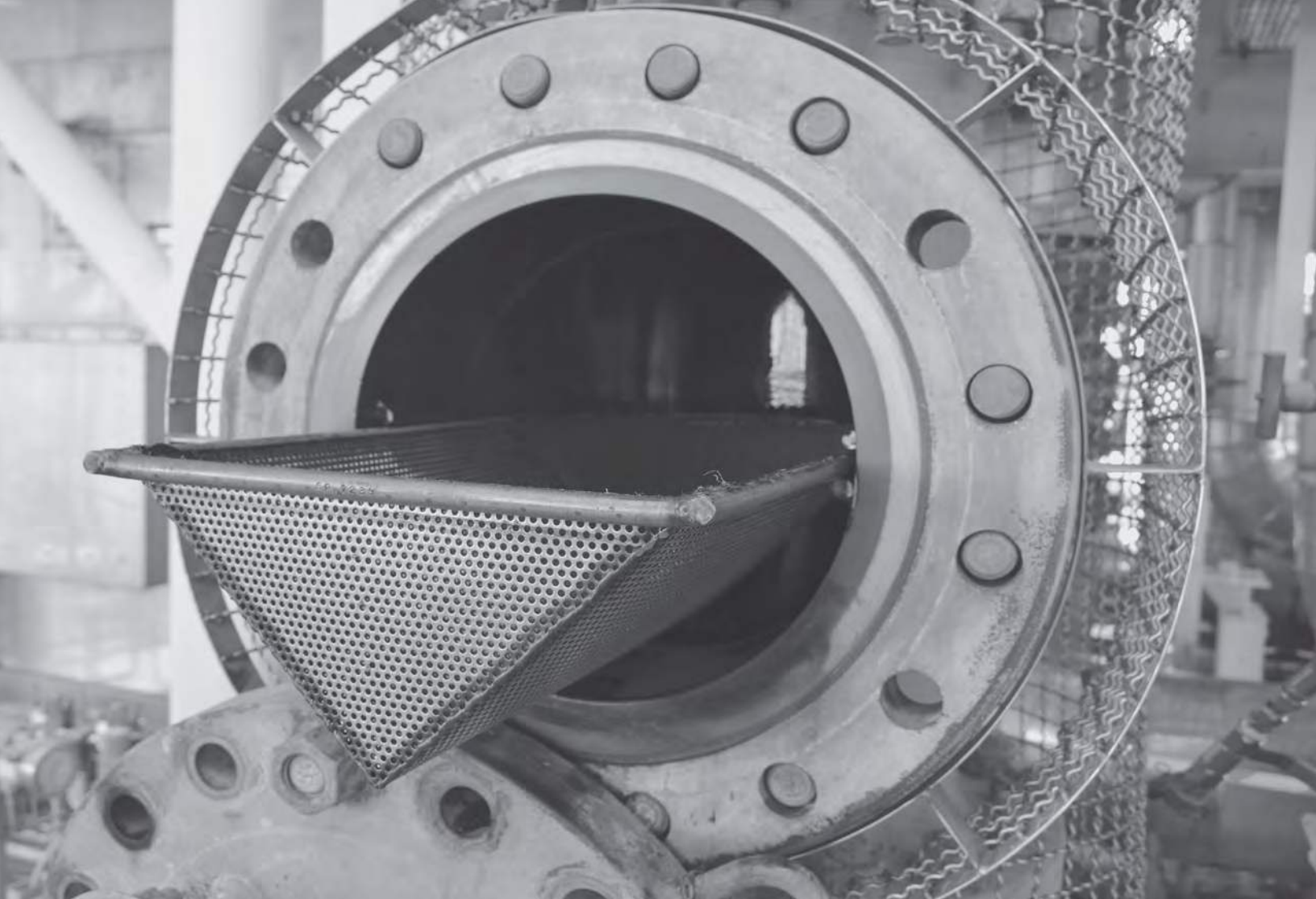
## REINFORCEMENT PADS

A Reinforcement Pad, or Repad, is a reinforcing, doughnut-shaped, rolled plate designed to allow a branch to be welded to a main pipe by “replacing the area” of the main pipe that was cut out. The dimensional data (size and thickness) of the Repad is determined by engineering calculations. RedLineIPS Reinforcing Pads are a cost-effective solution that eliminates the need for a three-way pipe fitting (Tee) with multiple weld requirements.

A test port, or “weep hole”, may be added to Repads, allowing trapped gases to vent during the welding process. The test port can be threaded to allow for a pressure gauge to be attached later to test for leaks.

SIZE RANGE	Custom sizes and thicknesses available
MATERIAL	Carbon, stainless, and other alloys



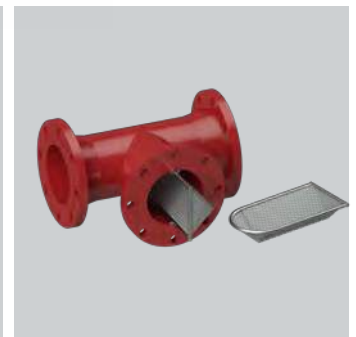
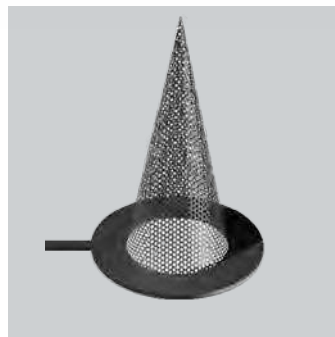
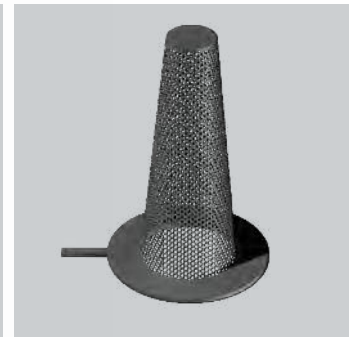
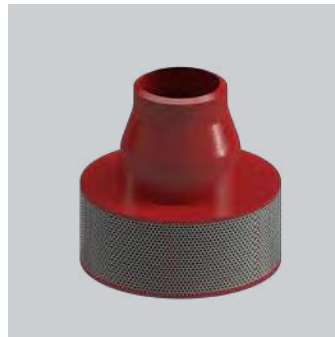


## STRAINERS

Start-up and post-maintenance of a pipe line can bring debris downstream that can damage and shut down piping systems. Strainers protect pipe lines as well as process equipment such as pumps, compressors, and turbines, allowing optimal movement of fluids for a worry-free operation. Mesh screens are fabricated to meet any flow rate requirement. Strainers are typically fabricated from stainless steel, but other materials are available to match your specific needs.

### TYPES OF STRAINERS

- Sump Suction Strainer
- Basket Strainer
- Cone Strainer
- Tee Strainer



# PIPING ACCESSORIES

## HANGERS

Pipe Hangers are used to suspend piping from structures located above the pipe. A hanger assembly typically consists of a clamp, eye nut, threaded rod, and a beam attachment. When distances between a pipe and its support structure is large, a turnbuckle can be used to provide adjustable length. Each component of a hanger assembly is sized based on the pipe size and load requirements.

SIZE RANGE	Custom sizes available
MATERIAL	Carbon, stainless, and aluminum
FINISH	Galvanized, painted, and uncoated



WELDLESS EYE NUT

Provides flexible connection when used with a threaded rod.



TURNBUCKLE

Used to adjust the elevation of the pipe.



THREADED EYE

Used in hanger rod assemblies. The welded design allows the eye to utilize the full strength of the rod.



FORGED STEEL CLEVIS

Connects hanger rods to pipe lugs, angles, etc. Available with and without pins.

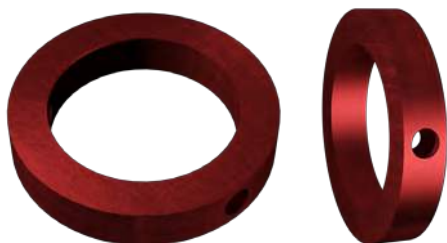


## BLINDS & BLEED RINGS

Blinds, such as spectacle blinds and paddle blinds, are used as isolation devices. Paddle blinds consist of a single metal disk that can be inserted between two flanges, stopping the flow of fluid or gas during maintenance.

Similar to paddle blinds, spectacle blinds have the same function but consist of two metal disks attached to each other. One side is to isolate material while the opposing side has a circular opening. The opening matches the bore diameter of the pipe, allowing material to flow.

Blinds can be can manufactured from carbon, stainless or any customer-specific material and finish. Sizes and thicknesses vary according to the pressure class, and our RedLineIPS brand of blinds can accommodate most customers.



Bleed Rings can be utilized in various forms depending on the required task.

- They can assist in draining pipes, bleeding valves, and taking samples.
- They also function as a method to reduce and relieve the pressure of a valve before removing the flange.

