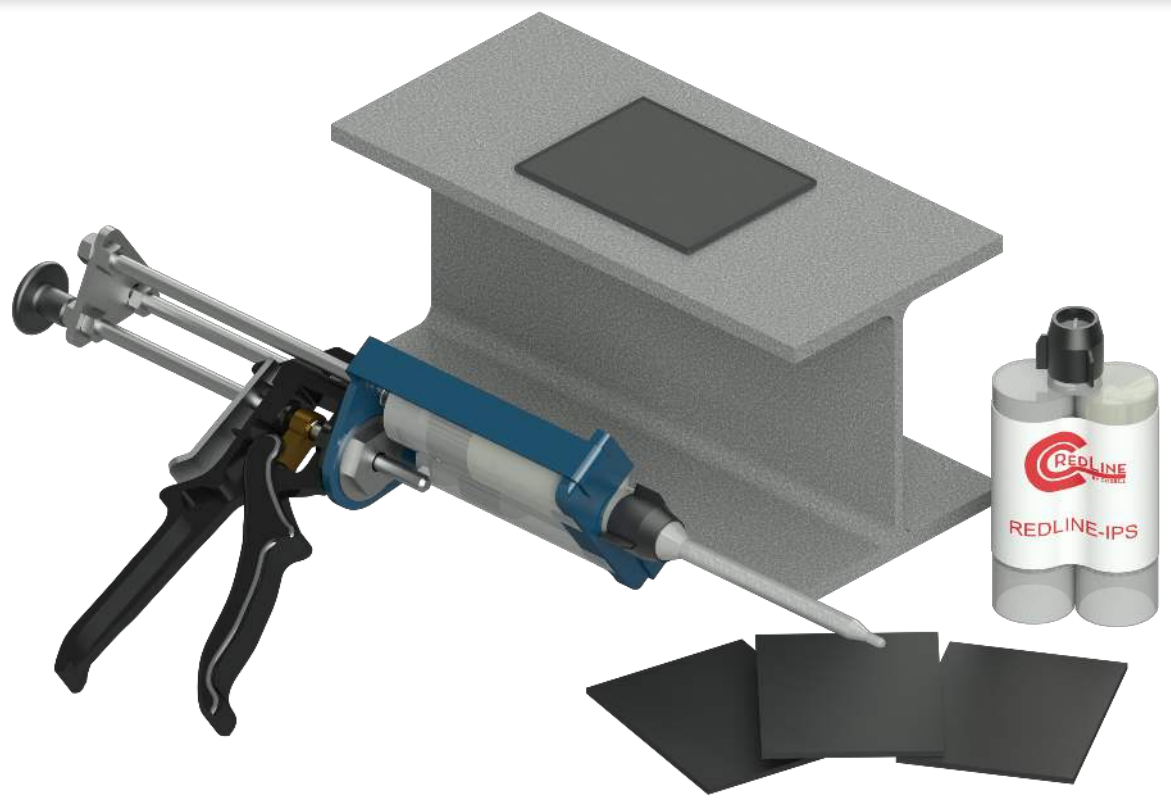


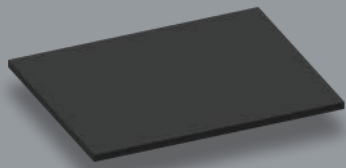


# FLAT PADS



Sales@RedLineIPS.com | www.CogbillConstruction.com | www.RedLineIPS.com | 2325 S. Main St. Vidor, TX 77662 | (409) 768-1419

## THE SYSTEM



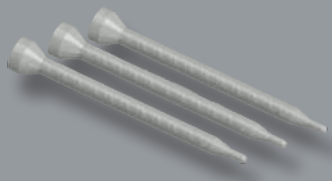
COMPOSITE FLAT PAD



TWO-PART EPOXY



APPLICATOR GUN



STATIC MIXER



EMERY CLOTH



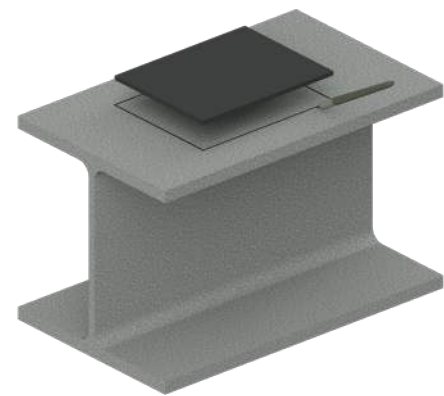
CONTACT CLEANER

## THE PROCESS



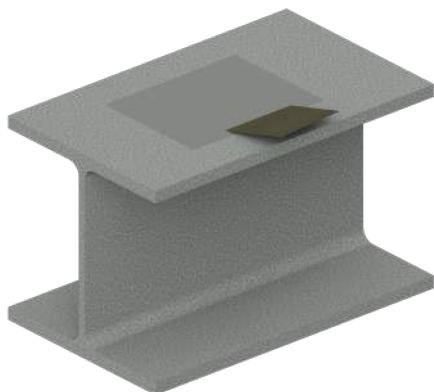
1

Put on required PPE, such as safety glasses, gloves, etc.



2

Place RedLineIPS pad on bonding surface (structure, piping, etc.) and mark off the outline of the pad on the surface to be prepped.



3

Abrade bonding surface, painted or unpainted, using emery cloth, sandpaper, etc. Surface should appear scuffed and free of loose debris, to create an anchor profile for the epoxy.



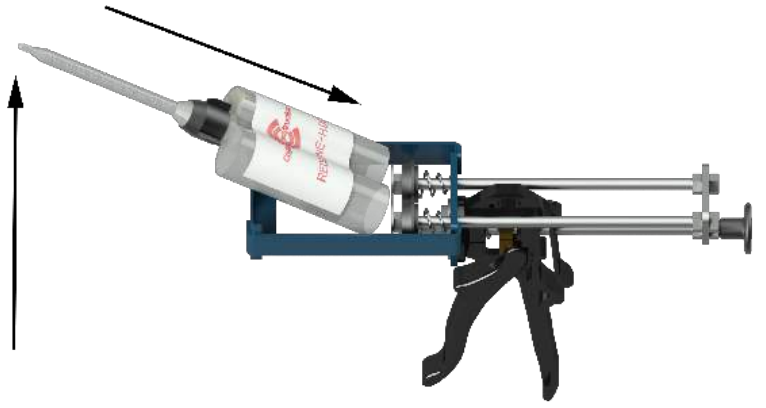
4

Identify RedLineIPS pad top and bottom (pad will be labeled). The bottom of the pad is the bonding side and is already textured and ready for adhesion.



5

Apply a high-flash solvent (contact cleaner, alcohol) to both the bonding surface and to the pad, then wipe with clean towel.



6

Attach epoxy static mixer to epoxy cartridge, then place cartridge in epoxy applicator.



7

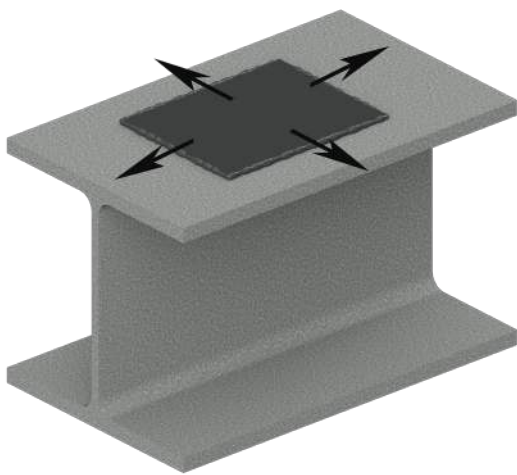
Squeeze applicator and make it expel and discard 5-6 inches of epoxy, to ensure epoxy in static mixer is thoroughly mixed, until epoxy has a dark grey color.



8

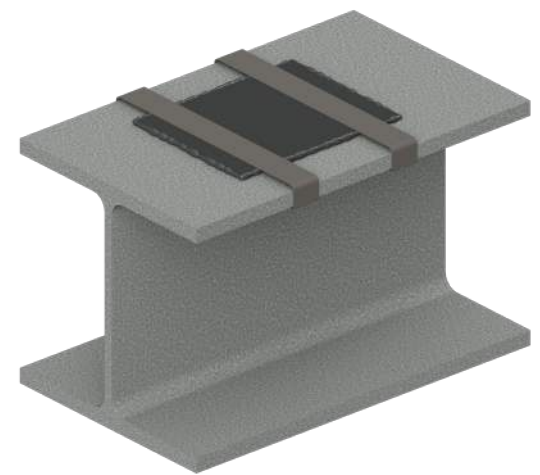
Apply epoxy to bottom of pad, starting with an outer bead along the entire perimeter, then continue in a zigzag pattern along the length of pad, with epoxy lines spaced roughly 1/2" apart.

Optional: A putty knife or similar can be used to spread epoxy down the center of pad, ensuring a complete layer of epoxy on pad's surface.



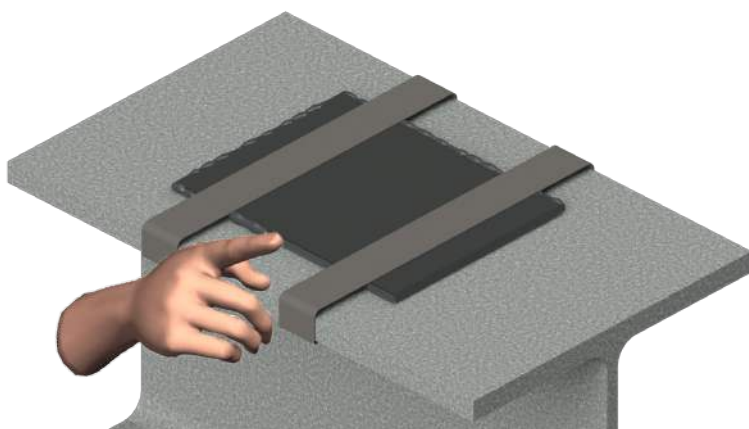
9

Carefully but firmly press pad onto the outlined bonding surface. Gently shift pad front to back and side to side about 1/8" to disperse epoxy and expel trapped air.



10

Use electrical duct tape, zip ties, ratchet straps, or similar to secure pad in place.



11

Using a covered finger, spread excess epoxy along bonding joint perimeter to create a fillet (sealing bead). Inspect bonding joint perimeter to ensure a continuous fillet. Apply additional epoxy as needed.

Base Material Temperature		Gel Time (mins.)	Cure Time (hrs.)
°F	°C		
50	10	75	72
60	16	60	48
70	21	45	24
90	32	35	24
110	43	20	24

12

Keep pad secured in place for a recommended 24 hours. Epoxy set time will be determined by ambient temperature and other factors, please contact for further details. Above is a general recommendation.

If you have questions regarding RedLineIPS Pad installation, or any matter regarding any RedLineIPS product, please contact us.  
(409) 768-1419, Fax (409) 768-1782 or Info@RedLineIPS.com